

Breather filter

RE 51414/02.09
Replaces: 08.08

1/6

Types BF 7 SL...; BS 7 SL...; BE 7 SL...; B 7 SL

Nominal size: BF 7 SL 45/21, 90, 130;
BS 7 SL 45/21, 90, 130;
BE 7 SL 45/21;
B 7 SL 45/21

Connections up to DN 32
Operating temperature -20 °C to +100 °C



H7612

Table of contents

Content	Page
Application	1
Design, maintenance intervals, and spare parts	2
Unit dimensions	3
Ordering details	4
Characteristic curves	5

Application

- Filtration and dehumidification of the intake air of industrial systems.
- Avoidance of initial damage in pumps and bearings and system components.

Design

BF 7 SL..., BS 7 SL...:

Breather filter with screw-off exchange filter cartridge and internal pleated filter element of filter paper P or micro glass H10XL.

Design with flange connection (BF 7 SL...) and/or welding socket (BS 7 SL...).

B 7 SL..., BE 7 SL...:

Breather filter with screw-off exchange filter cartridge and internal pleated filter element of filter paper P or micro glass H10XL.

Connection possibility for a clogging indicator (B 7 SL) and/or attachment of a filling filter (screen basket 500 µm). Materials as per spare parts list.

Maintenance intervals

Fields of application of the filter	Environmental conditions average dust content	Maintenance interval
General mechanical engineering	9...25 mg/m ³	4,000 h
Heavy industry	50...80 mg/m ³	3,000 h
Mobile hydraulics	30...100 mg/m ³	3,000 h

Spare parts list

Size				BF 7 SL 45/21	BF 7 SL 90 and 130, BS 7 SL 45/21, BS 7 SL 90 and 130, B 7 SL 45/21	BE 7 SL 45/21
Part	Piece	Description	Material			
1	1	Filter cartridge	various	Please indicate ordering information "Filter Cartridge"		
2	1	Seal ring	Fiber	Please indicate ordering information "Filter"		
3	1	Seal	Klingsil C4400	–	Please indicate the ordering information "Filter"	–
	2				–	Please indicate the ordering information "Filter"
	1		NBR	Please indicate the ordering information "Filter"	–	–
4	1	Filling screen	Steel	–		Part No. 5379
5	1	Seal	Cu			Please indicate the ordering information "Filter"
6	1	Countersunk screw	4.8			Part No. 4285

All part numbers BRFS specific.

Ordering details of the filter

		- S	- 0	0	0-00	M	0	0
--	--	-----	-----	---	------	---	---	---

Design

Breather with flange = BF 7 SL

Breather with welding socket= BS 7 SL

Breather with filler = BE 7 SL

Breather without filler = B 7 SL

Nom. size

BF 7 SL = 45/21 90 130

BS 7 SL = 45/21 90 130

BE 7 SL = 45/21

B 7 SL = 45/21

Filtration rating in µm nominal

Paper, non-cleanable = P...

P10, P25

absolute (ISO 16889)

Micro glass, non-cleanable

H10XL = H10XL

Pressure differential

Max. admissible pressure differential of the filter element

Standard = S

Element model

Standard adhesive T = 100 °C = 0...

Standard material = ...0

Complementary details

0 = without

Material

0 = Standard

Seal

M = NBR seal

Connection

00 = Standard

Connection in B 7 SL welding socket

Clogging indicator

0 = without

Bypass valve

0 = without

Solenoid

0 = without

Ordering example:

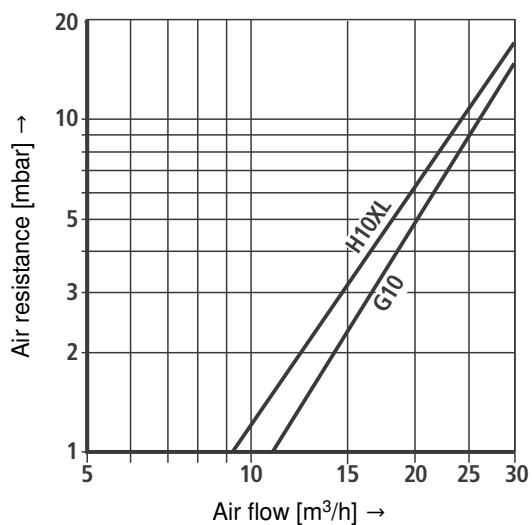
BF 7 SL 90 P10-S00-000-00M00

Ordering details of the filter cartridge

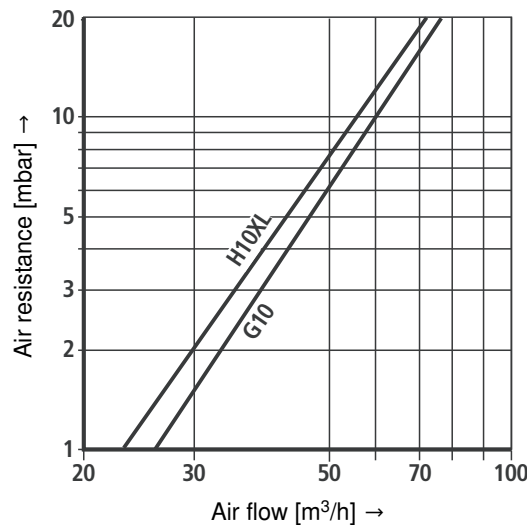
[illegible]

Characteristic curves (measured at test temperature = 20 °C)

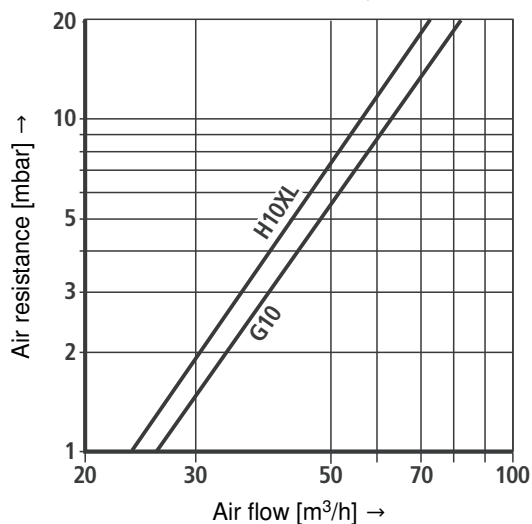
BF, BS 7 SL 45/21



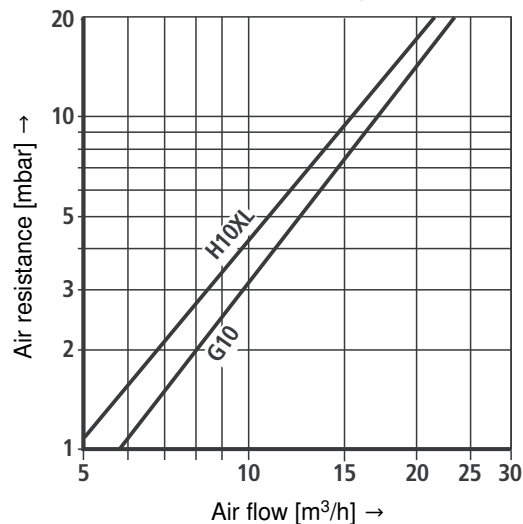
BF, BS 7 SL 90



BF, BS 7 SL 130

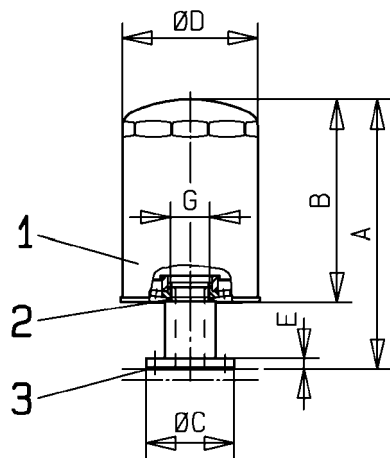


BF, B 7 SL 45/21

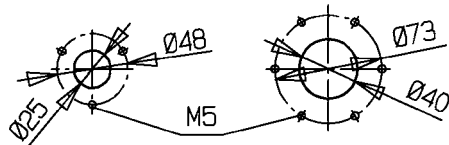


Unit dimensions (dimensions in mm)

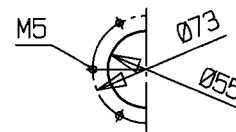
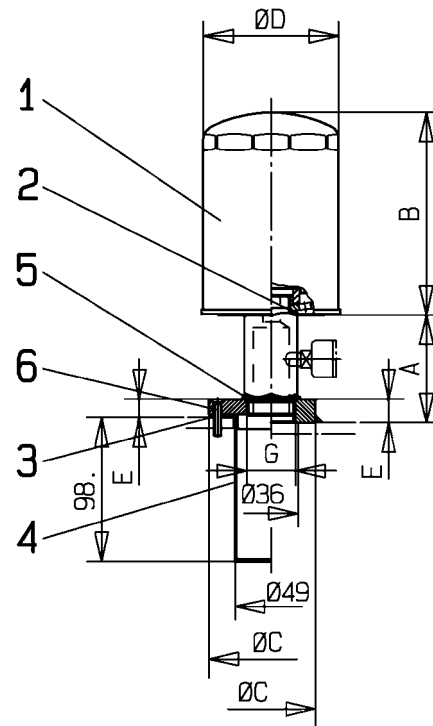
BF 7 SL 45/21
BF 7 SL 90
BF 7 SL 130



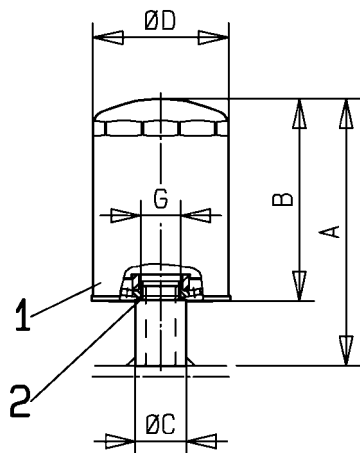
BF 7 SL 45/21 **BF 7 SL 90**
BF 7 SL 130



BE 7 SL 45/21
B 7 SL 45/21



BS 7 SL 45/21
BS 7 SL 90
BS 7 SL 130



Size	Weight in kg	A	B	Ø C	Ø D	E	G
BF 7 SL 45/21	0.8	189	146	60	92	7	G 3/4
BF 7 SL 90	1.4	231	183	85	128	9.5	G 1 1/4
BF 7 SL 130	1.5	279	231				
BS 7 SL 45/21	0.7	189	146	35	92	-	G 3/4
BS 7 SL 90	1.3	231	183	50	128		G 1 1/4
BS 7 SL 130	1.4	279	231				
BE 7 SL 45/21	1.3	67	146	85	92	11.5	G 1
B 7 SL 45/21	1.2	73		60		16	

Notes

Bosch Rexroth Filtration Systems GmbH
Hardtwaldstraße 43, 68775 Ketsch, Germany
POB 1120, 68768 Ketsch, Germany
Phone +49 (0) 62 02 / 6 03-0
Fax +49 (0) 62 02 / 6 03-1 99
brfs-support@boschrexroth.de
www.eppensteiner.de

© This document, as well as the data, specifications and other information set forth in it, are the exclusive property of Bosch Rexroth AG. It may not be reproduced or given to third parties without its consent. The data specified above only serve to describe the product. No statements concerning a certain condition or suitability for a certain application can be derived from our information. The information given does not release the user from the obligation of own judgment and verification. It must be remembered that our products are subject to a natural process of wear and aging.